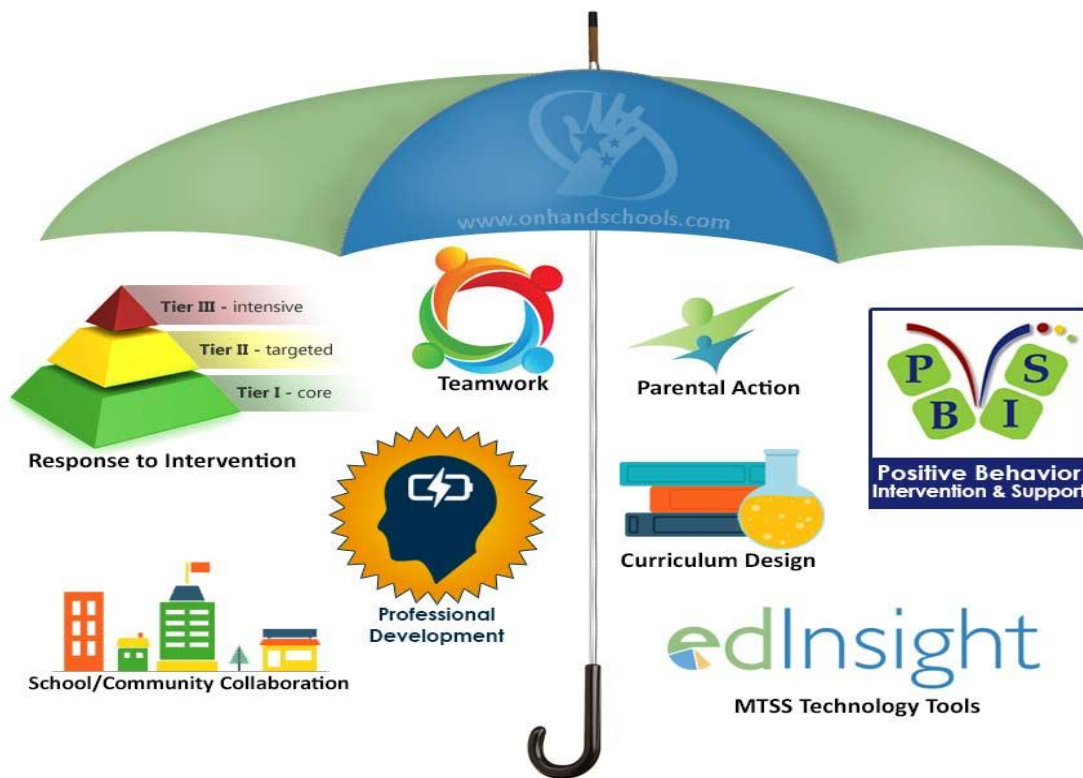


# Multi-tiered Systems of Support and Response to Intervention



Multi-tiered Systems of Support (MTSS) is a comprehensive decision-making model that uses data collection, problem-solving techniques, interventions and evaluation to improve student outcomes on both an individual student level and a system-wide level. While MTSS encompasses the Response-to-Intervention (RtI) model of a 3-tiered approach to monitoring student progress and providing interventions accordingly, it also provides a more rounded approach to student achievement. This includes teacher and staff development, collaborating with parent and community members and utilizing systems at the school and district level to promote academic achievement as well as social/emotional/behavioral development.

## What lives under the MTSS Umbrella



copyright 2015, OnHand Schools, all rights reserved

**More on the RtI model:** This process is viewed as an effective way to monitor progress and tailor interventions and instruction to students' individual learning styles. Students begin in the same tier by receiving the same quality instruction. Based on assessments, evaluations and other data, students are then placed in the next tier if they need more intensified interventions to be most successful. This multi-tiered approach can also help identify students with undiagnosed disabilities who may need intense interventions and specialized services to be most successful.