

TEN-4-FACESp

Bruising Clinical Decision Rule for Children < 4 Years of Age

TEN

Torso | Ears | Neck



FACES

Frenulum

Angle of Jaw

Cheeks (*fleshy part*)

Eyelids

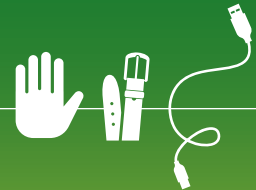
Subconjunctivae

4 months
and younger



Any bruise, anywhere

Patterned
bruising



Bruises in specific
patterns like slap,
grab or loop marks

REGIONS

INFANTS

PATTERNS

When is bruising concerning for abuse in children < 4 years of age?

If bruising in any of the three components (Regions, Infants, Patterns) is present without a reasonable explanation, strongly consider evaluating for child abuse and/or consulting with an expert in child abuse.

TEN-4-FACESp is not to diagnose abuse but to function as a screening tool to improve the recognition of potentially abused children with bruising who require further evaluation.

Validation of a Clinical Decision Rule to Predict Abuse in Young Children Based on Bruising Characteristics published and available for FREE download at <https://pubmed.ncbi.nlm.nih.gov/33852003/>

 Ann & Robert H. Lurie
Children's Hospital of Chicago®

