



INCLUSION

≥ 2 years of age

AND

Current asthma exacerbation

OR

3rd episode of wheezing (patients < 2 y/o)

**Per provider discretion: patient < 2 years of age and/or < 3rd episode of wheezing can be placed on pathway if clinically appropriate

EXCLUSION

• Intubated/CPAP /BiPAP

• Active cardiac disease

• Airway abnormalities/ Tracheostomy

• Bronchiolitis

• Cystic Fibrosis

• Neuromuscular Disease

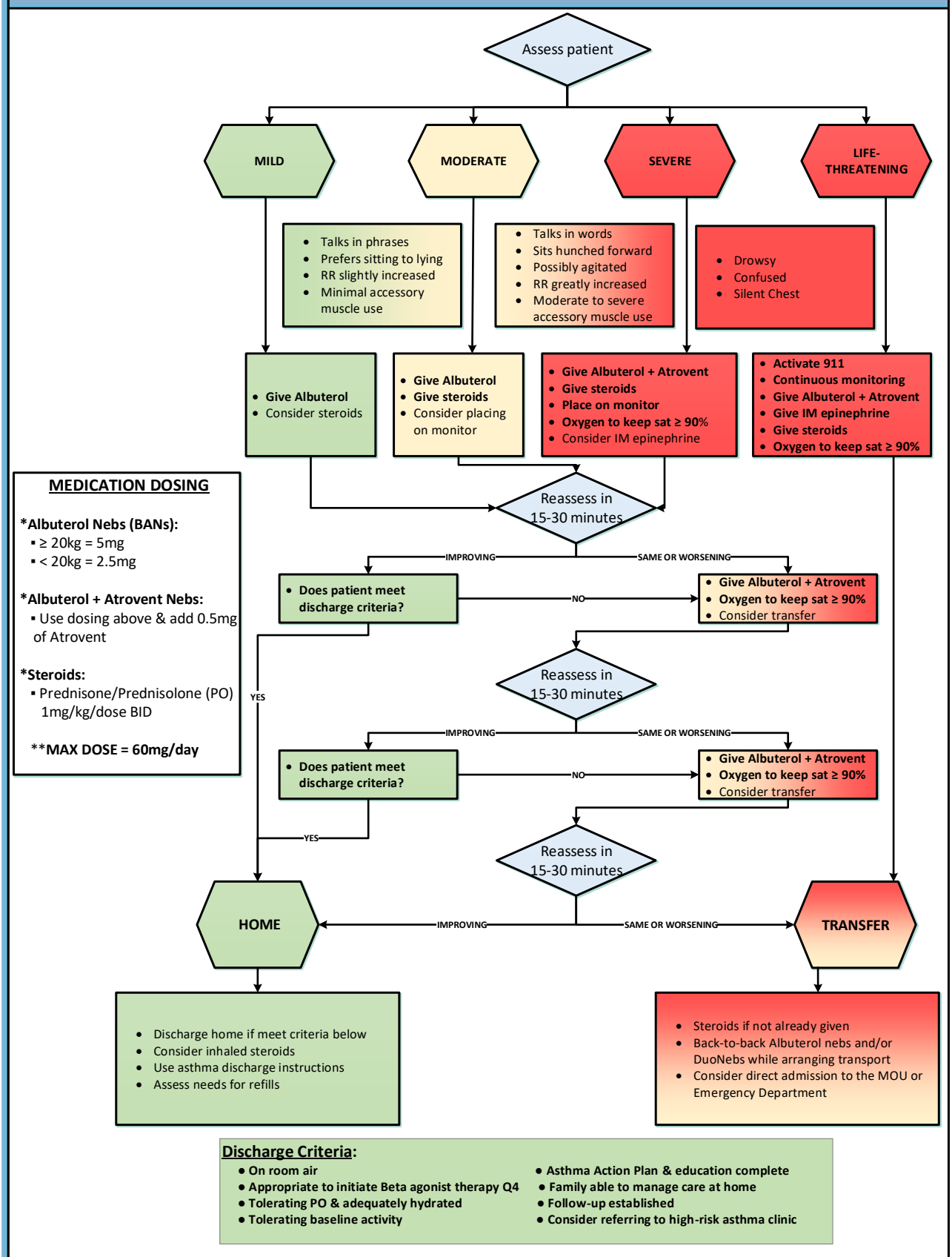
• Prematurity with severe lung disease

Targets

• 1st albuterol < 30 min from arrival

• Steroid < 45 min from arrival

• 3 nebs within 60 min of initiation of care





Evidence

Akinbami, L. J., Moorman, J. E., Garbe, P. L., & Sondik, E. J. (2009). Status of childhood asthma in the United States, 1980-2007. *Pediatrics*, *123 Suppl 3*, S131-145. doi: 10.1542/peds.2008-2233C

Arnold, et al, 2012, Performance of the Acute Asthma Intensity Research Score for Acute Asthma Protocols. *Ann Allergy Asthma Immunol*. 2012 July; 109(1): 78-79. doi:10.1016/j.anai.2012.05.007

Bartlett, K.W., Parente, V.M., Morales, V., Hauser, J., McLean H.S. (2017). Improving the efficiency of care for pediatric patients hospitalized with asthma. *Hospital Pediatrics*, *7*(1), 31-38. doi: 10.1542/hpeds.2016-0108

Becker, Allan; Nelson, Norma. The Pulmonary Index: Assessment of a Clinical Score for Asthma. ADJC - Col 138. June 1984.

Birken CS1, Parkin PC, Macarthur C. Asthma severity scores for preschoolers displayed weaknesses in reliability, validity, and responsiveness. *J Clin Epidemiol*. 2004 Nov; 57(11):1177-81.

Camargo, C. A., Jr., Spooner, C. H., & Rowe, B. H. (2003). Continuous versus intermittent beta-agonists in the treatment of acute asthma. *Cochrane Database Syst Rev*(4), CD001115. doi: 10.1002/14651858.cd001115

Carroll C, Sekaran A; Lerer T. A Modified Pulmonary Index Score with predictive value for pediatric asthma exacerbations. *Annals of Allergy Asthma and Immunology*. 2005; 94:355-359.

Castro-Rodriguez, J. A., & Rodrigo, G. J. (2004). beta-agonists through metered-dose inhaler with valved holding chamber versus nebulizer for acute exacerbation of wheezing or asthma in children under 5 years of age: a systematic review with meta-analysis. *J Pediatr*, *145*(2), 172-177. doi: 10.1016/j.jpeds.2004.04.007

Cates, C. J., Crilly, J. A., & Rowe, B. H. (2006). Holding chambers (spacers) versus nebulisers for beta agonist treatment of acute asthma. *Cochrane Database Syst Rev*(2), CD000052. doi: 10.1002/14651858.CD000052.pub2

CCHMC. (2010). Acute Asthma Guideline, Cincinnati Children's Hospital Medical Center: Evidence-based care guideline for management of acute asthma exacerbation in children *Asthma Exacerbation in Children Pediatric Evidence Based Care Guidelines, Cincinnati Children's Hospital Medical Center* (Vol. Guideline 4, pp. 1-35).

Chisolm, D. J., McAlearney, A. S., Veneris, S., Fisher, D., Holtzlander, M., & McCoy, K. S. (2006). The role of computerized order sets in pediatric inpatient asthma treatment. *Pediatr Allergy Immunol*, *17*(3), 199-206. doi: 10.1111/j.1399-3038.2005.00362.x

Delgado, A., Chou, K. J., Silver, E. J., & Crain, E. F. (2003). Nebulizers vs metered-dose inhalers with spacers for bronchodilator therapy to treat wheezing in children aged 2 to 24 months in a pediatric emergency department. *Arch Pediatr Adolesc Med*, *157*(1), 76-80.

Dolovich, M. B., Ahrens, R. C., Hess, D. R., Anderson, P., Dhand, R., Rau, J. L., . . . Guyatt, G. (2005). Device selection and outcomes of aerosol therapy: Evidence-based guidelines: American College of Chest Physicians/American College of Asthma, Allergy, and Immunology. *Chest*, *127*(1), 335-371. doi: 10.1378/chest.127.1.335



Evidence

Ducharme et al, 2008, *The Pediatric Respiratory Assessment Measure: A Valid Clinical Score for Assessing Acute Asthma Severity from Toddlers to Teenagers*. *J Pediatr* 2008; 152:476-80)

Fleming S, Thompson M, Stevens R. Normal ranges of heart rate and respiratory rate in children from birth to 18years of age: a systematic review of observational studies. *The Lancet*. Vol 377. Mar 2011.

Gorelick M, Stevens M, Schultz T. Performance of a Novel Clinical Score, the Pediatric Asthma Severity Score (PASS), in the evaluation of acute asthma. *Academic Emergency Medicine*. 2004. Vol 11.1

Gouin S, Robidas I, Gravel J. Prospective Evaluation of Two Clinical Scores for Acute Asthma in Children 18 months to 7 yrs of age. *Academic Emergency Medicine*. June 2010. Col 17.6

JCAHO. The Joint Commission. Children's Asthma Care (CAC) performance measure set. Retrieved 8/19/2012, from http://www.jointcommission.org/childrens_asthma_care/

Johnson KB, Blaisdell CJ, Walker A, Eggleston P. [Effectiveness of a clinical pathway for inpatient asthma management](#). *Pediatrics*. 2000 Nov; 106(5):1006-12. PubMed PMID: 11061767.

Kelly CS, Andersen CL, Pestian JP, Wenger AD, Finch AB, Strobe GL, Luckstead EF. [Improved outcomes for hospitalized asthmatic children using a clinical pathway](#). *Ann Allergy Asthma Immunol*. 2000 May; 84(5):509-16. PubMed PMID: 10831004.

Kenyon CC1, Fieldston ES2, Luan X2, Keren R2, Zorc JJ3. Safety and effectiveness of continuous aerosolized albuterol in the non-intensive care setting. *Pediatrics*. 2014 Oct;134(4):e976-82. doi: 10.1542/peds.2014-0907.

Kwan-Gett, Tao Sheng; Lozano, Paula, etc. One-Year Experience with an Inpatient Asthma Clinical Pathway. *Arch of Pediatric and Adolescent Medicine*. Vol 151. July 1997

Landrigan, C. P., Conway, P. H., Stucky, E. R., Chiang, V. W., & Ottolini, M. C. (2008). Variation in pediatric hospitalists' use of proven and unproven therapies: a study from the Pediatric Research in Inpatient Settings (PRIS) network. *J Hosp Med*, 3(4), 292-298. doi: 10.1002/jhm.347

Leversha, A. M., Campanella, S. G., Aickin, R. P., & Asher, M. I. (2000). Costs and effectiveness of spacer versus nebulizer in young children with moderate and severe acute asthma. *J Pediatr*, 136(4), 497-502.

Lowell D, Lister G. Wheezing in Infants: The response to Epinephrine. *Pediatrics*. 1987. Vol 79.6

McDowell, K. M., Chatburn, R. L., Myers, T. R., O'Riordan, M. A., & Kerckmar, C. M. (1998). A cost-saving algorithm for children hospitalized for status asthmaticus. *Arch Pediatr Adolesc Med*, 152(10), 977-984.

MMWR. (2011). Vital signs: asthma prevalence, disease characteristics, and self-management education: United States, 2001--2009. *MMWR Morb Mortal Wkly Rep*, 60(17), 547-552.



Evidence

Morse, R. B., Hall, M., Fieldston, E. S., McGwire, G., Anspacher, M., Sills, M. R., . . . Shah, S. S. (2011). Hospital-level compliance with asthma care quality measures at children's hospitals and subsequent asthma-related outcomes. *JAMA*, 306(13), 1454-1460. doi: 10.1001/jama.2011.1385

NAEPP. (2007). *Expert Panel Report 3 (EPR-3)*. Washington, DC: National Institutes of Health National Heart, Lung, and Blood Institute Retrieved from <http://www.nhlbi.nih.gov/guidelines/asthma/asthgdln.htm>.

Narus, S. P., Srivastava, R., Gouripeddi, R., Livne, O. E., Mo, P., Bickel, J. P., . . . Keren, R. (2011). Federating clinical data from six pediatric hospitals: process and initial results from the PHIS+ Consortium. *AMIA Annu Symp Proc*, 2011, 994-1003.

Norton, S. P., Pusic, M. V., Taha, F., Heathcote, S., & Carleton, B. C. (2007). Effect of a clinical pathway on the hospitalisation rates of children with asthma: a prospective study. *Arch Dis Child*, 92(1), 60-66. doi: 10.1136/adc.2006.097287

Parkin, P., Macarthur, C., et al., Development of a Clinical Asthma Score for Use in Hospitalized Children between 1 and 5 Years of Age. *J Clin Epidemiol* Vol. 49, No. 8, pp. 821-825, 1996

Rutman et al. (2016). Modification of an established pediatric asthma pathway improves evidence-based, efficient care. *Pediatrics*, 138(6), e1-e10. doi: 10.1542/peds.2016-1248

Sabato, K., Ward, P., Hawk, W., Gildengorin, V., Asselin, J. (2011). Randomized controlled trial of a breath-actuated nebulizer in pediatric asthma patients in the emergency department. *Respiratory Care*, 56(6), 761-70.

Smith S, Baty J, Hodge D. Validation of the Pulmonary Score: As Asthma Severity Score for Children. *Academic Emergency Medicine*. Feb 2002. Vol 9.2

Strub M, Frey C Jr, Waskerwitz S, Unfer S, Luskin AT, Chudwin DS. [Clinical assessment score and peak expiratory flow rate. Correlation in acute childhood asthma.](#) *IMJ Ill Med J*. 1986 Jul; 170(1):30-2. PubMed PMID: 2874121.

Titus, M.O., Eady, M., King, L.B., Bowman, M. (2012). Effectiveness of a breath-actuated nebulized device on asthma care in the pediatric emergency department. *Clinical Pediatrics*, 1-5. doi: 10.1177/0009922812458356

Wazeka, A., Valacer, D.J., Cooper, M., Caplan, D.W., & DiMaio, M. (2001). Impact of a pediatric asthma clinical pathway on hospital cost and length of stay. *Pediatr Pulmonol*, 32(3), 211-216.

Contributors:

Lori Bakker, RN
Arnold Butiu, RN
Mary Caselton, RN

Erin Harvey, MD
Janet Heston, RN
Brandon Parker, MD