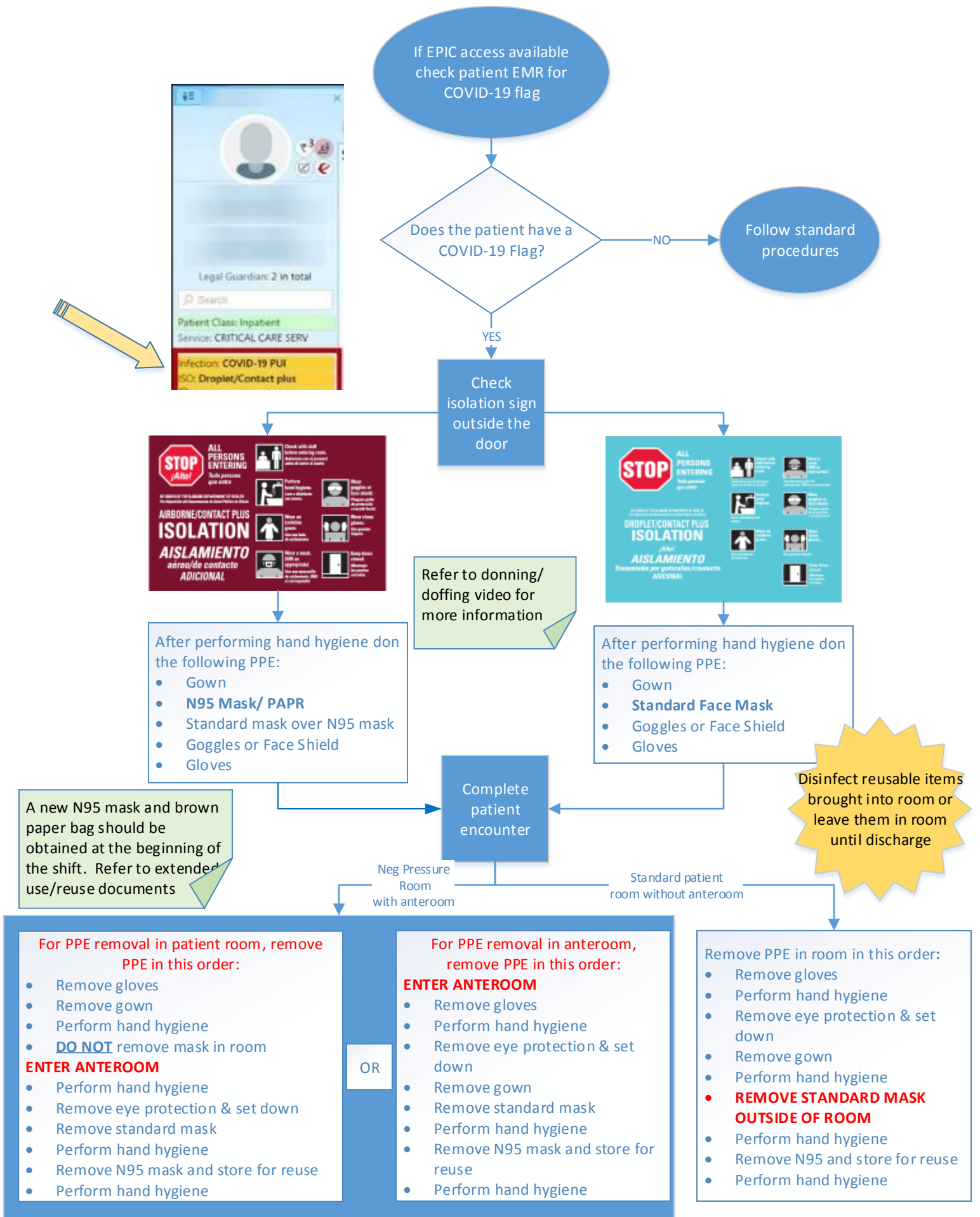


New isolation signage for COVID+ or COVID suspected patients 4.14.20



If EPIC access available
check patient EMR for
COVID-19 flag

Does the patient have a
COVID-19 Flag?

Follow standard
procedures

Check
isolation sign
outside the
door



Refer to donning/
doffing video for
more information

After performing hand hygiene don
the following PPE:
• Gown
• N95 Mask/ PAPR
• Standard mask over N95 mask
• Goggles or Face Shield
• Gloves

After performing hand hygiene don
the following PPE:
• Gown
• Standard Face Mask
• Goggles or Face Shield
• Gloves

Disinfect reusable items
brought into room or
leave them in room
until discharge

A new N95 mask and brown
paper bag should be
obtained at the beginning of
the shift. Refer to extended
use/reuse documents

Complete
patient
encounter

Neg Pressure
Room
with anteroom

Standard patient
room without anteroom

For PPE removal in patient room, remove
PPE in this order:

- Remove gloves
- Remove gown
- Perform hand hygiene
- DO NOT** remove mask in room

ENTER ANTEROOM

- Perform hand hygiene
- Remove eye protection & set down
- Remove standard mask
- Perform hand hygiene
- Remove N95 mask and store for reuse
- Perform hand hygiene

OR

For PPE removal in anteroom,
remove PPE in this order:

ENTER ANTEROOM

- Remove gloves
- Perform hand hygiene
- Remove eye protection & set down
- Remove gown
- Remove standard mask
- Perform hand hygiene
- Remove N95 mask and store for reuse
- Perform hand hygiene

Remove PPE in room in this order:

- Remove gloves
- Perform hand hygiene
- Remove eye protection & set down
- Remove gown
- Perform hand hygiene
- REMOVE STANDARD MASK OUTSIDE OF ROOM**
- Perform hand hygiene
- Remove N95 and store for reuse
- Perform hand hygiene