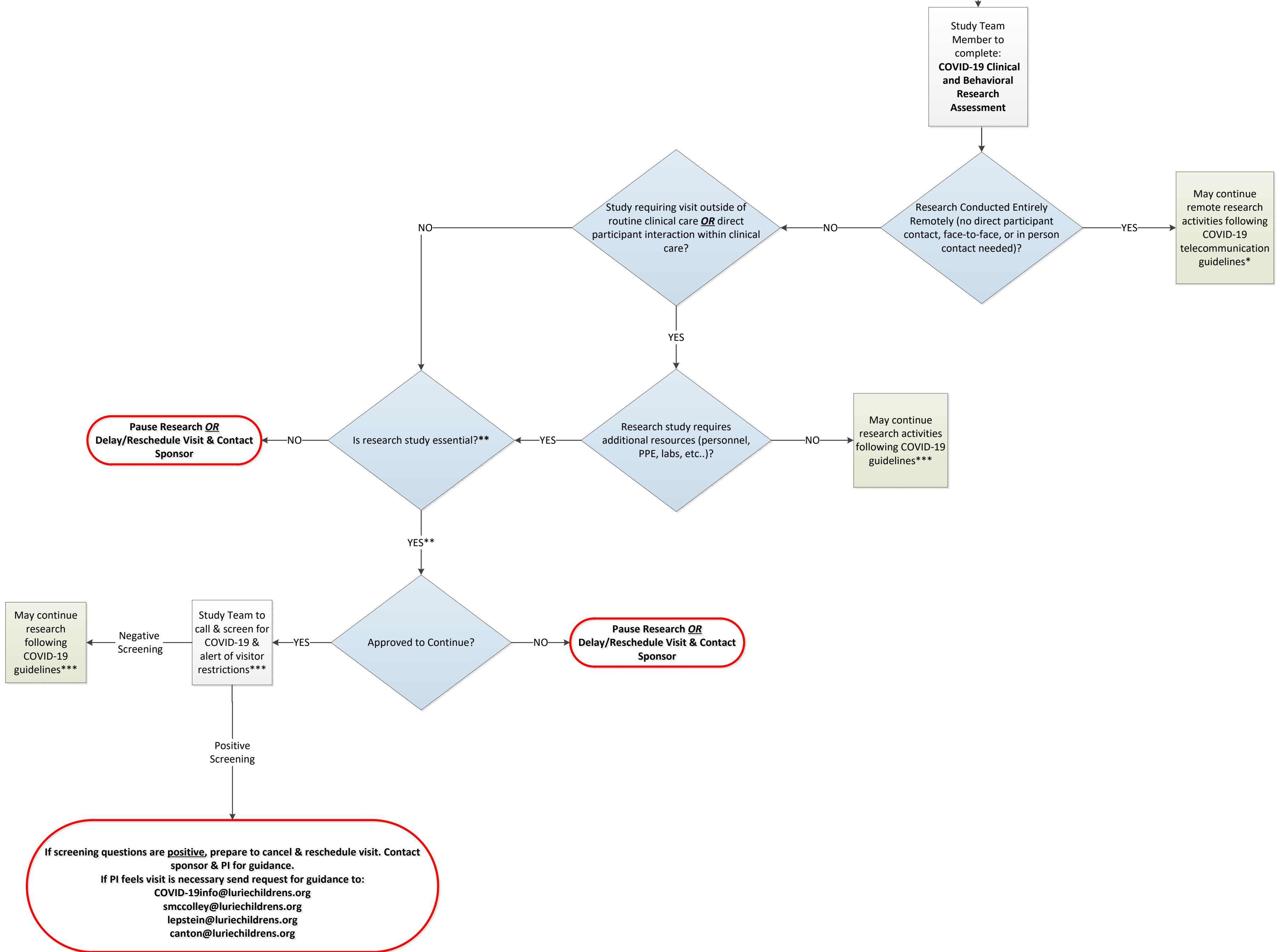


Manne Research Institute  
 Leadership Review of IRB  
 Approved Study

\*Telecommunication Guidance

\*\*Essential research includes ongoing research that, if paused, would harm research participants. The risk of harm to participants must be balanced with the risk of health care facility and community spread of COVID-19.

\*\*\*<https://www.luriechildrens.org/en/for-healthcare-professionals/education/2019-novel-coronavirus-2019-ncov-faq-for-lurie-childrens-healthcare-providers/>



If screening questions are **positive**, prepare to cancel & reschedule visit. Contact sponsor & PI for guidance.  
 If PI feels visit is necessary send request for guidance to:  
 COVID-19info@luriechildrens.org  
 smccolley@luriechildrens.org  
 lepstein@luriechildrens.org  
 canton@luriechildrens.org