



Creating the Conditions for All Children, Families and Communities to Thrive

2023 Maltreatment Symposium

October 26, 2023





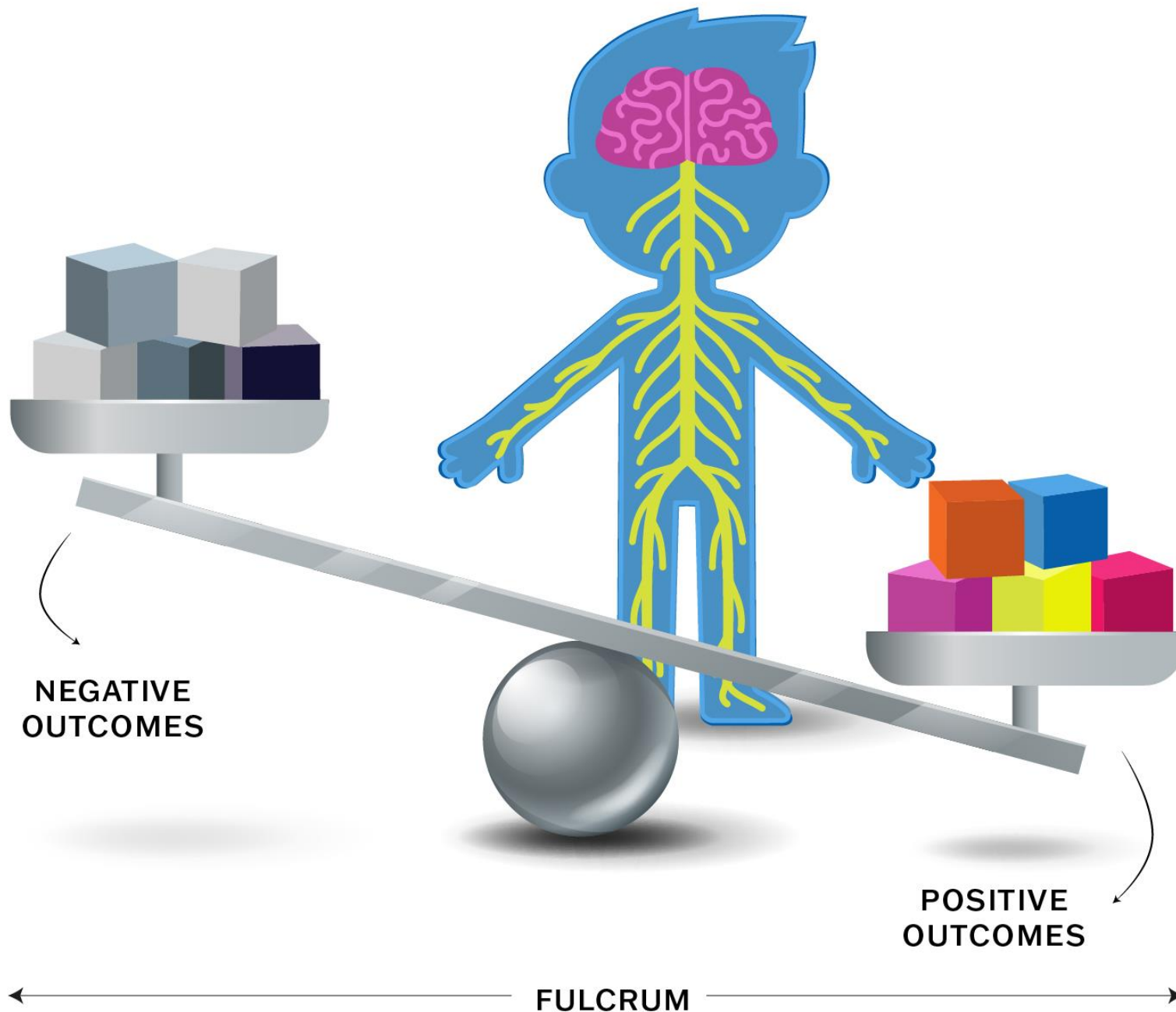
Mission:

*To prevent the abuse and neglect
of our nation's children.*

Vision:

*We envision a world where all children
grow up happy, healthy, and prepared
to succeed in supportive families and
communities.*

...because childhood lasts a lifetime!



**National Scientific Council on the Developing Child. (2015). Supportive Relationships and Active Skill-Building Strengthen the Foundations of Resilience: Working Paper 13. <http://www.developingchild.harvard.edu>*

Adverse Childhood Experiences (ACEs)

ABUSE



Physical



Emotional



Sexual

NEGLECT



Physical



Emotional

HOUSEHOLD CHALLENGES



Mental Illness



Parent Treated Violently



Divorce



Incarcerated Relative



Substance Abuse

Evidence shows that stress and trauma can interrupt healthy child development, putting people at risk for lifelong health issues.



Public health is what we, as a society, do
collectively to assure the **conditions** in
which (all) people can be healthy.

Institute of Medicine
The Future of Public Health, 1988 & 1997

WHAT ARE THE “**ROOT CAUSES**” OF CHILD ABUSE AND NEGLECT?



WHAT ARE THE “**ROOT CAUSES**” OF CHILD ABUSE AND NEGLECT?

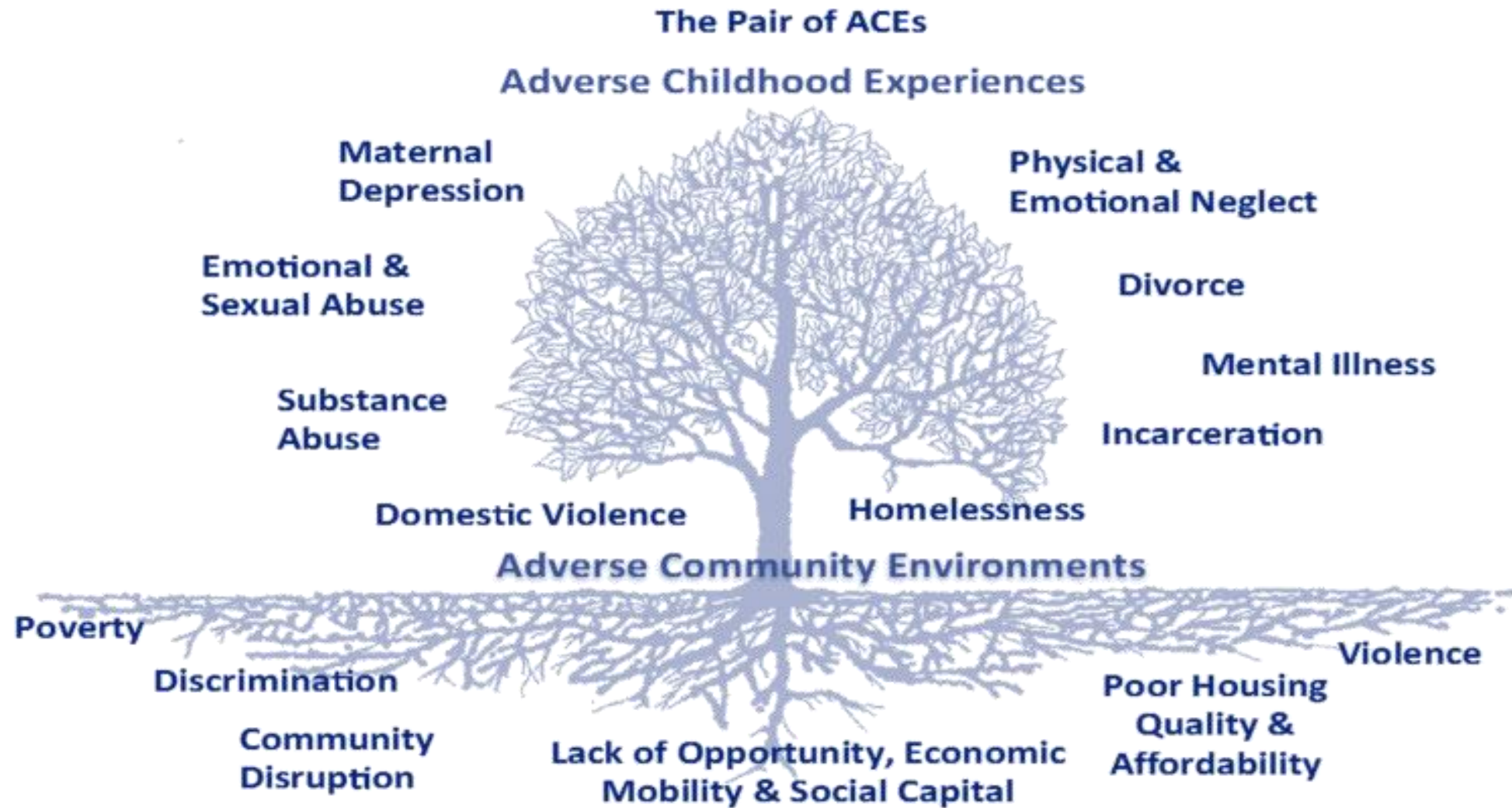


NOT bad parents

WHAT ARE THE “**ROOT CAUSES**” OF CHILD ABUSE AND NEGLECT?



Adverse **COMMUNITY** Conditions



Ellis, W., Dietz, W. (2017) A New Framework for Addressing Adverse Childhood and Community Experiences: The Building Community Resilience (BCR) Model. *Academic Pediatrics*. 17 (2017) pp. S86-S93. DOI information: [10.1016/j.acap.2016.12.011](https://doi.org/10.1016/j.acap.2016.12.011)

**RENT
CAR PAYMENT
CHILD CARE
DEBT
INSURANCE
UTILITIES
CLOTHING
FOOD
FAMILY**

RACISM
DISCRIMINATION
SEXISM
UNEMPLOYMENT
POVERTY
EXCLUSION
BIAS
MARGINALIZATION
DADD

Adverse community conditions affect some kids in America more than others.

BIPOC children most likely to be living in poverty in the US



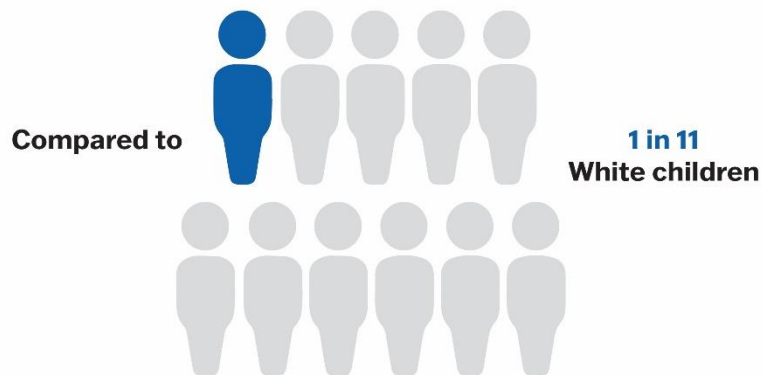
Nearly **1 in 3** Black children



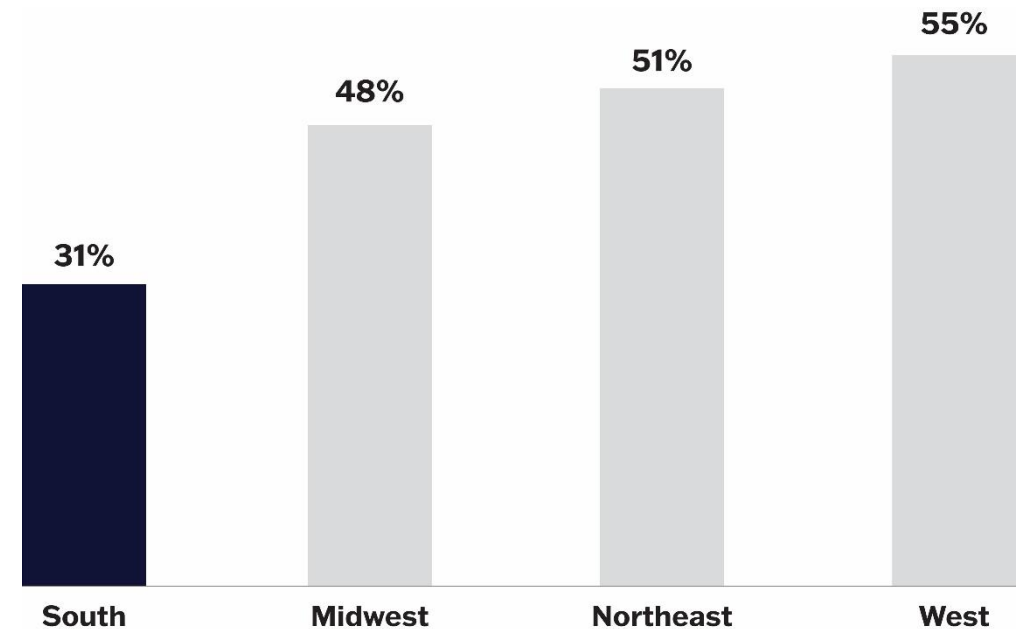
Nearly **1 in 3** American Indian/Alaska Native children



Nearly **1 in 4** Latino children



Black children in the South have the lowest access to amenities associated with healthy childhood development compared to Black children in other regions



Changing
adverse
community
conditions
reduces **child
abuse and
neglect**

For *every* \$1,000 states spent per person in poverty directly addressing **financial stability, housing, and access to child care and healthcare...**



4.3% reporting

4% substantiations

2.1% foster care placements

7.7% fatalities

By **addressing root causes** of abuse and neglect, we can prevent significant physical and mental health issues and **foster healthier, more equitable, more prosperous communities.**

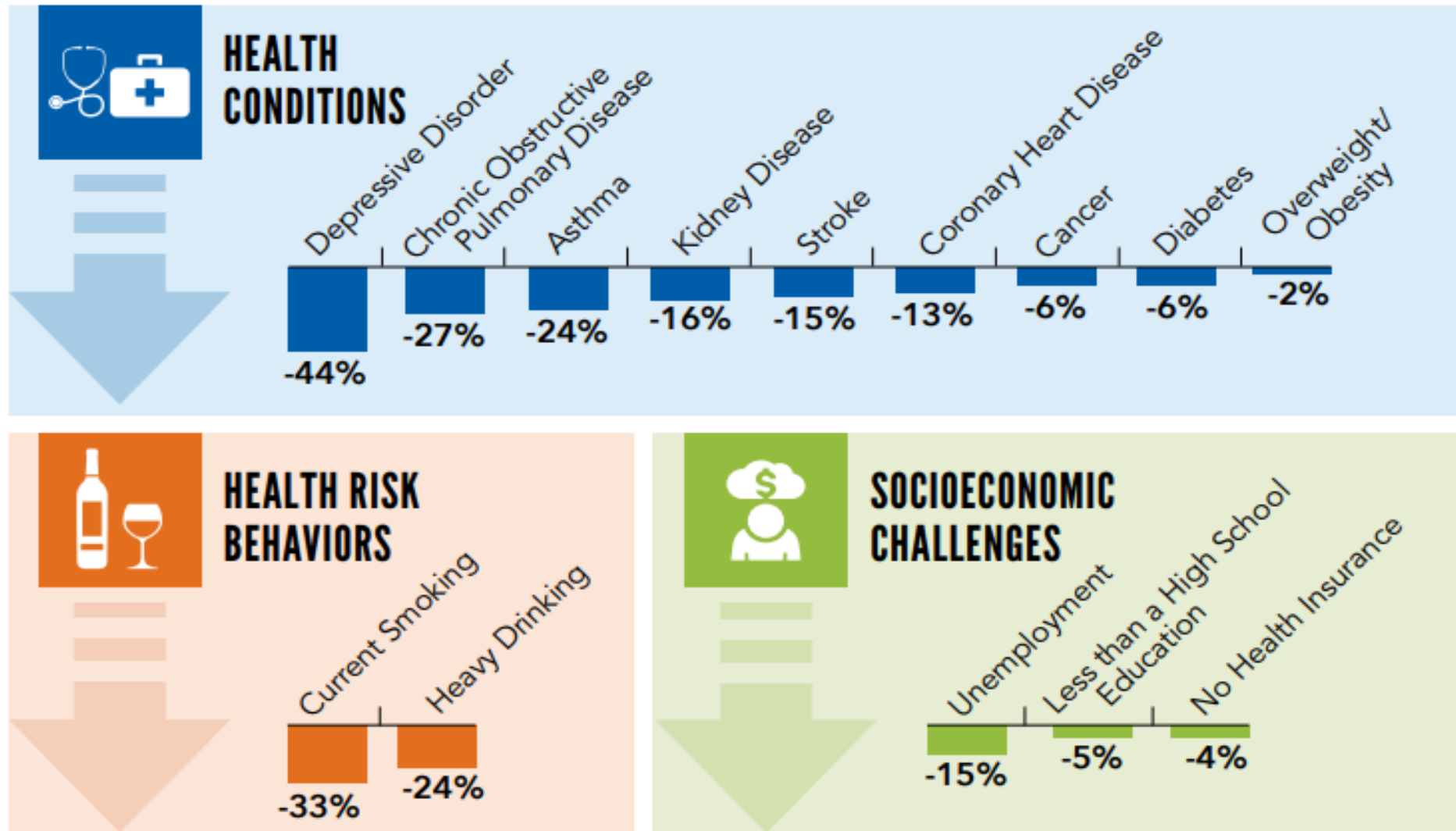
Role of Public Health in Violence Prevention



ROLE OF CRIMINAL JUSTICE, CHILD WELFARE, SOCIAL SERVICES, HEALTHCARE

**Preventing child abuse and neglect and
other ACEs seems **BIG**,
but prevention **IS** possible.**

Potential reductions in negative health outcomes



SOURCE: BRFSS 2015-2017, 25 states, CDC Vital Signs, November 2019.

What needs to change?



31 billion
is spent by state
and local child
welfare
organizations

Only 14% is spent
on prevention

- Too many children experience a **child protection investigation** (Black children are disproportionately impacted).
- Too many children and young people are **separated from their families**.
- Poverty is confused with neglect, causing **unnecessary child removals**.
- Teenagers are inappropriately removed for **behavior and parent/child conflict**.
- Child welfare primarily funds **child removal, not prevention**.

**Prevention happens in partnership, with
consistent yet flexible messaging**

^{CDC}Vitalsigns™

#vitalsigns
NOV. 2019

Adverse Childhood Experiences (ACEs) Preventing early trauma to improve adult health



Want to learn more?
www.cdc.gov/vitalsigns/aces

1 in 6

1 in 6 adults experienced four or more types of ACEs.

5 of 10

At least 5 of the top 10 leading causes of death are associated with ACEs.

44%

Preventing ACEs could reduce the number of adults with depression by as much as 44%.

Overview:

Adverse Childhood Experiences (ACEs) are potentially traumatic events that occur in childhood. ACEs can include violence, abuse, and growing up in a family with mental health or substance use problems. Toxic stress from ACEs can change brain development and affect how the body responds to stress. ACEs are linked to chronic health problems, mental illness, and substance misuse in adulthood. However, ACEs can be prevented.

Preventing ACEs can help children and adults thrive and potentially:

- Lower risk for conditions like depression, asthma, cancer, and diabetes in adulthood.
- Reduce risky behaviors like smoking, and heavy drinking.
- Improve education and job potential.
- Stop ACEs from being passed from one generation to the next.



PROBLEM:

Adverse Childhood Experiences impact lifelong health and opportunities.

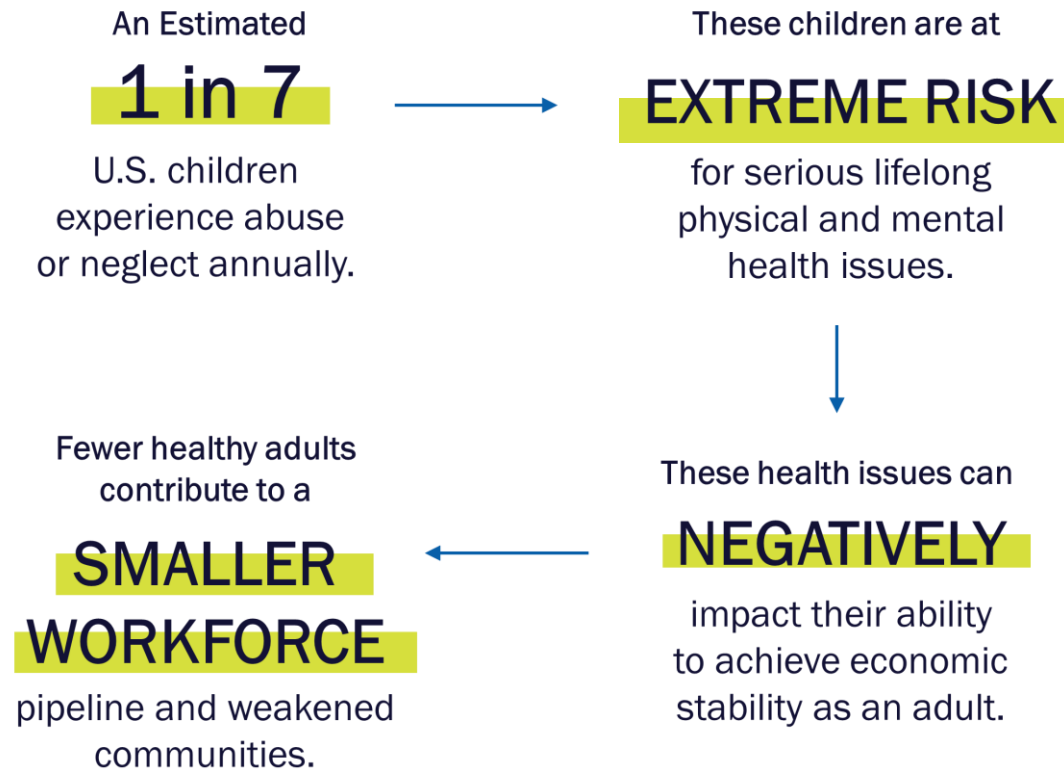
ACEs are common and the effects can add up over time.

- 61% of adults had at least one ACE and 16% had 4 or more types of ACEs.
- Females and several racial/ethnic minority groups were at greater risk for experiencing 4 or more ACEs.
- Many people do not realize that exposure to ACEs is associated with increased risk for health problems across the lifespan.



Centers for Disease
Control and Prevention
National Center for Injury
Prevention and Control

Child abuse and neglect affects all of us.



MOM
COMMUNITY
SOCIAL SERVICES
FRIENDS
SCHOOLS
FAITH GROUPS
FAMILY

POLICY OPTIONS TO STRENGTHEN FAMILIES

Maternal & Child Health

- Evidence-based Home Visiting programs
- Prenatal Care
- Enhanced primary care

Economic Stability

- Tax credits
- Minimum wage
- Income supports
- Paid Leave programs
- Nutrition programs

Community and Education & Awareness

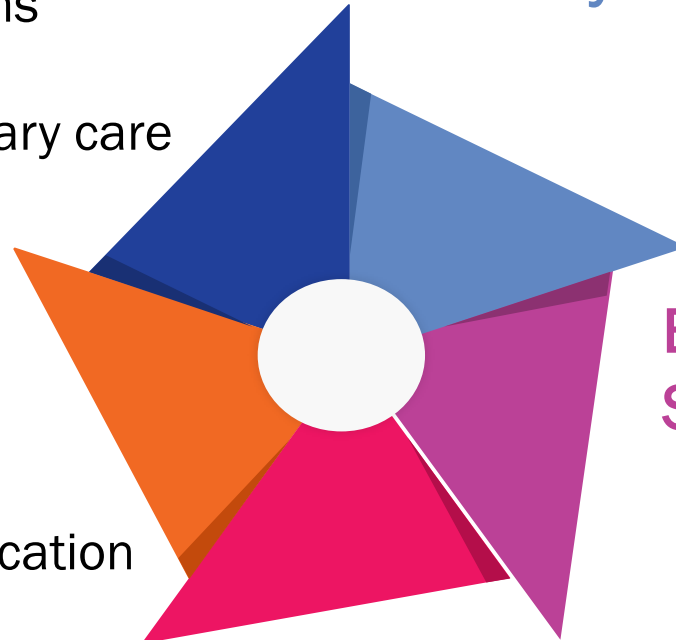
- 1-800 Warm Lines
- Public education campaigns
- Family Resource Centers
- Child sex abuse prevention education

Early Childhood Supports

- Pre-K & Afterschool programs
- Parent support and education
- Quality and affordable childcare

Mental Health Supports

- Accessible mental health services
- Behavioral parent training programs
- Trauma informed care in schools and childcare centers



**CHILD NEGLECT
IS A PARENTING
ISSUE PUBLIC
ISSUE.**

**CHILDHOOD
ADVERSITY IS
~~INEVITABLE~~
PREVENTABLE.**

**CHILDHOOD
ADVERSITY IS
~~UNSOLVABLE~~
SOLVABLE.**

Prevention Happens in Partnership



Values

- ✓ Equity
- ✓ Integrity
- ✓ Evidence
- ✓ Transformation
- ✓ Family-Centered

Beliefs

- ✓ All children, parents, and families should be able to get the **supports** they need, when they need them, in their own communities, without stigma before they are in crisis.
- ✓ Prevention is **possible**
- ✓ The well-being of one is **imperative** to the well-being and prosperity of all
- ✓ Everyone plays a **role** in prevention



OUR ADAPTIVE STRATEGY PROCESS

Grounding in research and evidence

- Reviewed research and prevention frameworks
- Feedback from content experts

Engagement of multiple perspectives

- 23 engagement opportunities involving over 480 individuals: parents and families, HFA network staff, chapter CEOs, PCA staff, and our key partners
- Input from thought leaders and national organizations within the field
- National survey with over 1200 individuals
- Zooming out speaker series

North Star:

All children and families
are living a purposeful and
happy life with hope for
the future

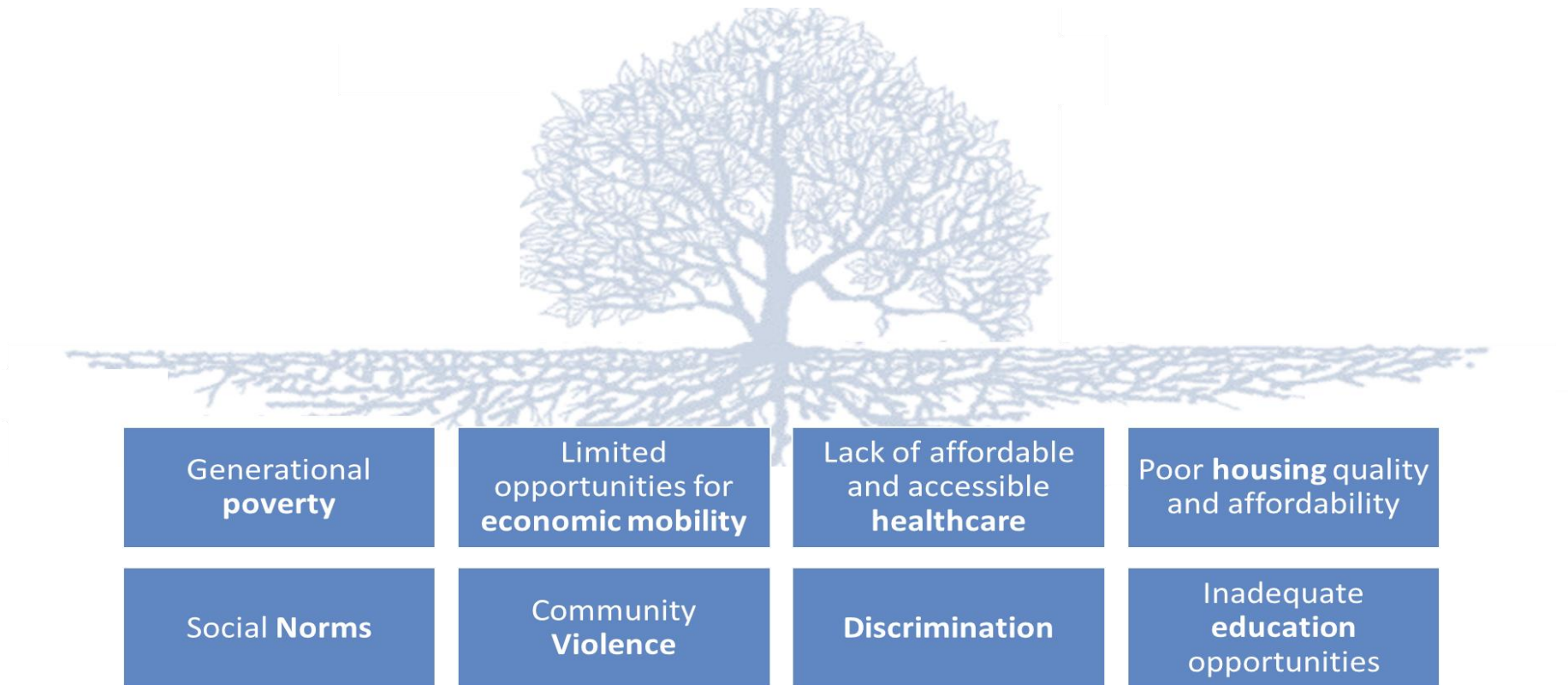


THEORY of Change

All children and families are living a purposeful and happy life with hope for the future



*Adapted from Watson & Collins, 2022



WHAT IS NEEDED TO ADDRESS THESE CONDITIONS?

Building an Aligned and Comprehensive
Primary Prevention Ecosystem

ASPIRATIONS FOR CHILDREN AND FAMILIES

Loving and secure family relationships supported by foundational life skills

Access to formal and informal family supports

Mental and physical health and wellbeing across the lifespan

Financial stability and economic mobility

COMPREHENSIVE PRIMARY PREVENTION ECOSYSTEM

SHARED VALUE FOR PREVENTION

Mindsets

Formal Goals

PREVENTION STRUCTURES

Decision-Making

Policies & Practices

Connections

PREVENTION RESOURCES

Leaders and Staff

Family Supports,
Opportunities, and
Environments

ASPIRATIONS FOR CHILDREN AND FAMILIES

COMPREHENSIVE PRIMARY PREVENTION ECOSYSTEM

PCA AMERICA STRATEGIES

PCA AMERICA VALUES AND BELIEFS

PCA AMERICA STRATEGIES

- 1 Transform the narrative around prevention

- 2 Center families as partners in decision-making

- 3 Build and leverage evidence

- 4 Amplify collaborative learning, feedback loops, and adaptive action

- 5 Grow and sustain human and financial capacity to advance prevention

NORTH STAR: All children and families are living a purposeful and happy life with hope for the future

ASPIRATIONS FOR CHILDREN AND FAMILIES

Loving and secure family relationships supported by foundational life skills

Access to formal and informal family supports

Mental and physical health and wellbeing across the lifespan

Financial stability and economic mobility

COMPREHENSIVE PRIMARY PREVENTION ECOSYSTEM

SHARED VALUE FOR PREVENTION

Mindsets advocate for cross-sector solutions that support positive childhoods for all children

Formal goals advance primary prevention for all children and families with accountability

PREVENTION STRUCTURES

Decision-making engages families* and uses evidence, rapid feedback, and an equity approach

Policies and practices are designed and implemented to support positive childhoods for all children

Connections enable diverse partners to share information, resources, and to collaborate

PREVENTION RESOURCES

Leaders and staff are diverse and have the capacity and wellbeing to support positive childhoods for all children

Family supports, opportunities, and environments are accessible to and meeting the needs of all families

Add Entity Name Here

STRATEGIES

Transform the narrative around prevention

Center families* as partners in decision-making

Build and leverage evidence and influence to advocate for effective policies, practices, programs, and systems

Amplify collaborative learning and adaptive action

Grow and sustain human and financial capacity to advance prevention

Add Entity Name Here

VALUES, BELIEFS, AND APPROACHES

*Families can include biological, foster, adoptive and stepparents, grandparents and other caregiving kin, legal and informal guardians, and children and youth

**You can be the
difference that
lasts a lifetime.**



Learn more
preventchildabuse.org